



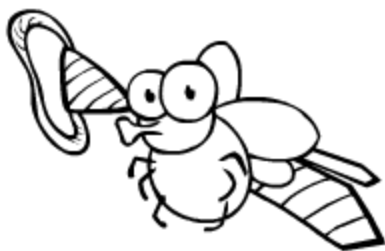
The mouse is in the doghouse.



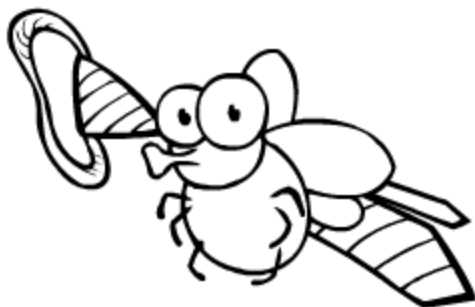
The bee is under the key.



The bat is over the hat.



The fly is in front of the tie.



Cut out the individual cards along dashed lines.

----- CUT OUT



The cat is on the mat.



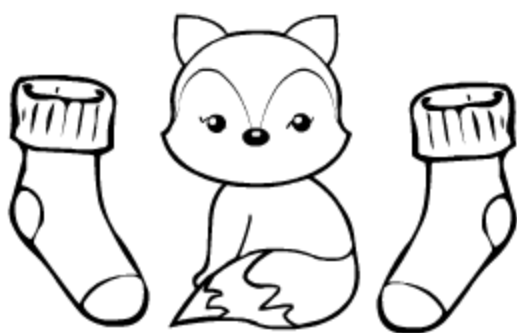
The bear is behind the pear.



The dog is next to the log.



The fox is between the socks.

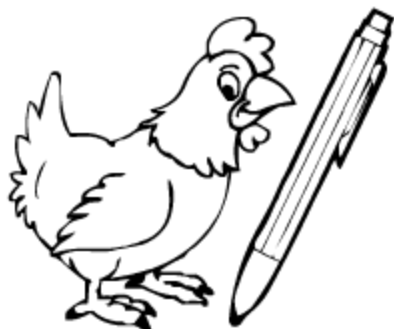




The chick is on the stick.



The hen is next to the pen.



The pig is behind the fig.



The snake is in front of the cake.





The mole is in the bowl.



The bees are over the peas.



The fish is on the dish.



The kitten is under the mitten.





The snail is on the nail.



The lamb is in the pram.

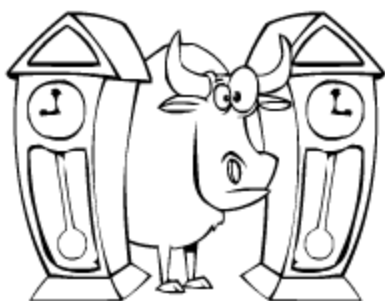


The rat is opposite the cat.

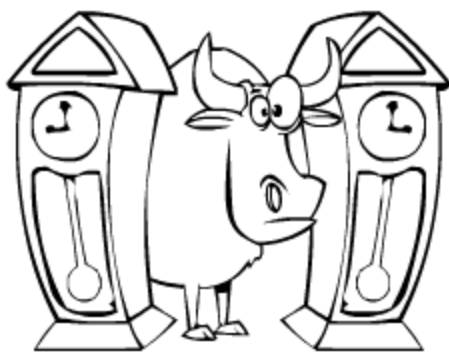


The frog is opposite the dog.





The ox is between the clocks.



The parrot is over the carrot.



The dragon is in the wagon.



The goose is among the bottles of juice.





The newt is in front of the boot.



The owl is on the towel.



The rat is in the hat.



The frog is on the log.

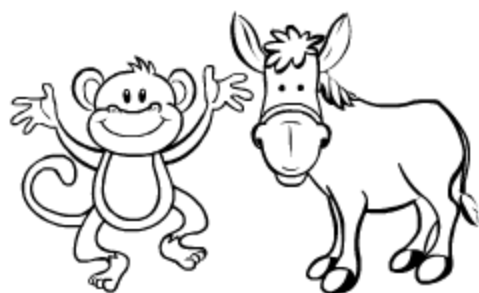


Cut out the individual cards along dashed lines.

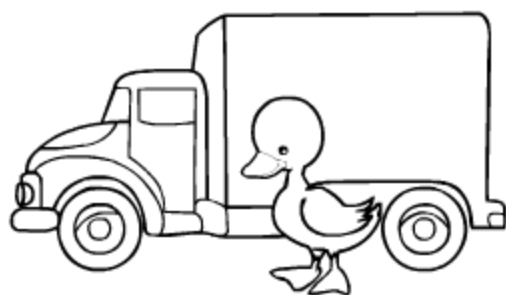
----- CUT OUT



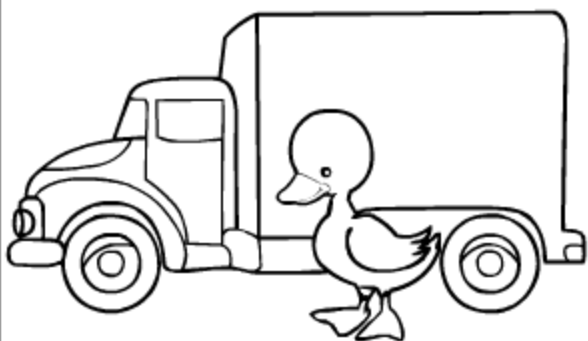
The ant is behind the plant.



The monkey is next to the donkey.



The duck is in front of the truck.



The mice are behind the bowl of rice.



Cut out the individual cards along dashed lines.

----- CUT OUT